

## **\$914,800 - 11322 79 Avenue Nw, Edmonton**

MLS® #E4261981

### **\$914,800**

5 Bedroom, 6.00 Bathroom, 2,020 sqft  
Single Family on 0.08 Acres

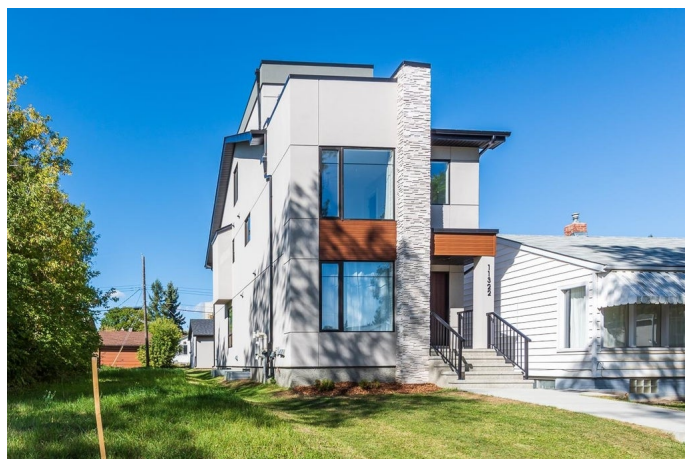
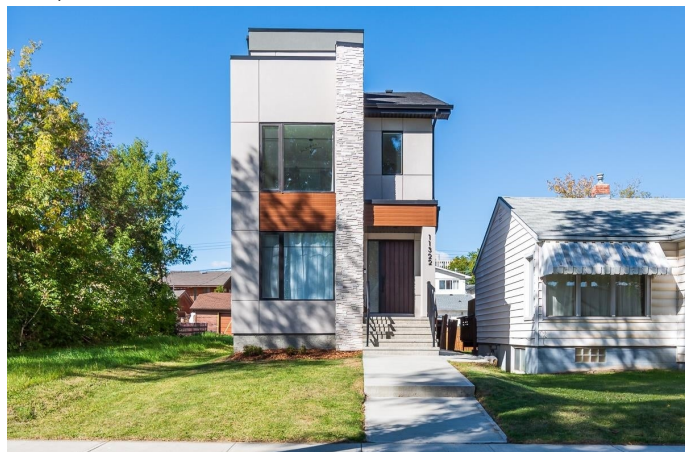
Mckernan, Edmonton, AB

Welcome to this Spectacular custom built home located in one of Edmonton's most highly sought after communities - McKernan! This 2000+ Sq Ft 2.5 storey features 5 bedrooms, a loft (also can be a bedroom) & 5.5 bathrooms with 4 finished levels. The Main floor plan suits family life & entertaining! The main floor is open with hardwood, custom kitchen with granite counter top, convenient off entrance den. Large windows flood the home w/ natural light. On the 2nd level you will find the master bedroom and 2 other great sized bedrooms, ALL comes with its own ensuite! The 3rd level is great for entertaining or simply use it as bdrm, full bath, south facing rooftop patio. The fully finished Legal bsmt is a 2 br suite with separate entrance! Great for the extra income! Other features includes double garage, large deck, & a fully landscaped yard. Just minutes to LRT, U of A hospital and campus, River Valley, Whyte Avenue, Downtown & more.

Built in 2017

### **Essential Information**

MLS® #	E4261981
Price	\$914,800
Bedrooms	5
Bathrooms	6.00



Full Baths	5
Half Baths	1
Square Footage	2,020
Acres	0.08
Year Built	2017
Type	Single Family
Sub-Type	Residential Detached Single Family
Style	2 and Half Storey
Status	ACTIVE

### **Community Information**

Address	11322 79 Avenue Nw
Area	Edmonton
Subdivision	Mckernan
City	Edmonton
County	ALBERTA
Province	AB
Postal Code	T6G 0P3

### **Amenities**

Features	Ceiling 9 ft., Detectors Smoke, See Remarks
Parking	Double Garage Detached
# of Garages	2

### **Interior**

Interior	Carpet, Ceramic Tile, Laminate Flooring
Interior Features	Washer, Refrigerators-Two, Stoves-Two, Dryer, Hood Fan
Heating	Forced Air-1
Fireplace	Yes
Fireplaces	Electric, Tile Surround, Wall Mount
# of Stories	3
Has Basement	Yes
Basement	Fully Finished, Full

### **Exterior**

Exterior	Stucco
Exterior Features	Golf Nearby, Playground Nearby, Public Transportation, Schools, Shopping Nearby
Roof	Asphalt Shingles

Construction      Wood Frame

Foundation      Concrete

### **Additional Information**

Date Listed      September 9th, 2021

Data is deemed reliable but is not guaranteed accurate by the REALTORS® Association of Edmonton. Copyright 2022 by the REALTORS® Association of Edmonton. All rights reserved.