

\$750,000 - 31 Fosbury Link, Sherwood Park

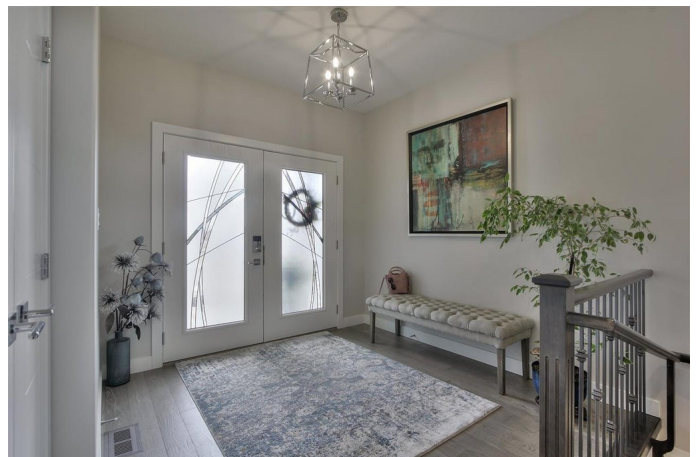
MLS® #E4240241

\$750,000

2 Bedroom, 3.00 Bathroom, 1,314 sqft
Single Family on 0.12 Acres

Salisbury Village, Sherwood Park, AB

Through the front door be greeted by gorgeous wood floors & 9 foot ceilings directing you into the main living area of the home. Large dining, beautiful brown cabinetry, contrasted by white quartz countertops, stainless steel appliances, gas range, stainless fridge, walkthrough butler's pantry off the garage. The dream garage is 22 x 34 triple attached tandem w-acrylic flooring drain, radiant heat & water! The main floor also has vaulted ceilings, beautiful living room w/ gas fireplace, stone mantle and bright windows that let light in both east & south! The primary bedroom is just perfect for a king size bed & all of your furniture, five piece en-suite w/ deep soaker tub, dual vanity, glass walk in shower & fully fixtured walk in closet! Down the beautiful wrought iron staircase you'll be greeted by a sit at bar, projection TV w/ surround sound & wet bar w/ fridge, bedroom #2 and a gym! (could be bed #3). Additionally there is AC, vinyl decking, stone patio, BBQ gas line, gazebo on a corner lot!



Built in 2018

Essential Information

MLS® #	E4240241
Price	\$750,000
Bedrooms	2

Bathrooms	3.00
Full Baths	2
Half Baths	1
Square Footage	1,314
Acres	0.12
Year Built	2018
Type	Single Family
Sub-Type	Residential Detached Single Family
Style	Bungalow
Status	ACTIVE

Community Information

Address	31 Fosbury Link
Area	Sherwood Park
Subdivision	Salisbury Village
City	Sherwood Park
County	ALBERTA
Province	AB
Postal Code	T8B 0B3

Amenities

Features	Air Conditioner, Ceiling 9 ft., Closet Organizers, Deck, No Smoking Home, Vinyl Windows, See Remarks, Bar, Porch, Gazebo, Wet Bar
Parking	Triple Garage Attached
# of Garages	3
Garages	22' x 34'10"

Interior

Interior	Carpet, Engineered Wood
Interior Features	Dishwasher-Built-In, Dryer, Refrigerator, Stove-Electric, Washer, Window Coverings
Heating	Forced Air-1
# of Stories	2
Has Basement	Yes
Basement	Full, Fully Finished

Exterior

Exterior	Hardie Board Siding
Exterior Features	Fenced, Landscaped, Low Maintenance Landscape, No Back Lane,

Playground Nearby, Schools, Shopping Nearby, See Remarks, Corner,
Flat Site, Picnic Area

Roof	Asphalt Shingles
Construction	Wood Frame
Foundation	Concrete

Additional Information

Date Listed April 24th, 2021

Data is deemed reliable but is not guaranteed accurate by the REALTORS® Association of Edmonton. Copyright 2021
by the REALTORS® Association of Edmonton. All rights reserved.